

Side Mounting Options

Enables units to be mounted on their side when space is limited.



Scalable from 1 to 5, or more.

Side Mounting Options



Scalable from 1 to 5, or more.



Single Louvar PC in a side mounting case



Two Louvar PC's mounted side by side



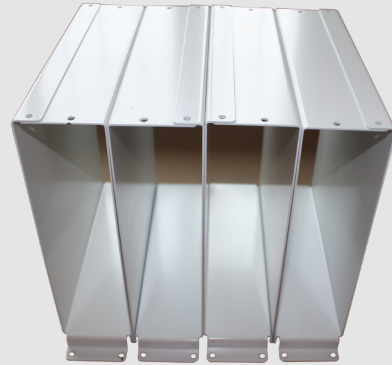
Three Louvar PC's mounted , in staggered formation



Four Louvar PC's mounted , in separated formation



Four Louvar PC's mounted
, in separated formation



Empty mounting cases
showing front desk
mounting holes.



The back of the mounting
case is open to allow access
to all the connections

Stacking options



Scalable from 1 to 5, or more.

Stacking options

Scalable from 1 to 5, or more.



Angle mounts attach directly to the Louvar and allow unit to be bolted to the desk or surface



Mounts do not interfere with cables at the back or access to the front.



The side angle mounts do not restrict airflow or block air vents.



stainless steel bolts, slotted or torx, attach to side of Louvar



Mounts do not interfere with cables at the back or access to the front.



Riser mounts bolted to the sides of each Louvar ensure the PC's are securely held



each Louvar mount overlaps the other to give extra stability



Three Louvar PC's mounted using stacking brackets



Four Louvar PC's mounted using stacking brackets



Five Louvar PC's mounted using stacking brackets



If stacked more than 2 units high then further shock and vibration testing may be required

Thin client, Mini Louvar ZX4

Mounting ideas
and options



Thin client, Mini Louvar ZX4



Mounting ideas and options



Single Louvar PC in a side
mounting case



Louvar PC under desk



Single Louvar PC in
adjustable mount



Single Louvar PC under desk



Rear screen mounting



Rear screen mounting



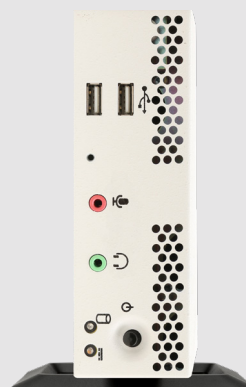
Rear screen mounting



Single Louvar PC with enclosure



Single Louvar PC in a side mounting case



Single Louvar PC in a vertical mounting case



Rear screen mounting



Full size Louvar on
mount on rear of screen



Full size Louvar on mount
on rear of screen

Colour options





Colour options



Colour options - Blue



Colour options - Blue



Colour options – Grey –
with matching stand



Colour options - Grey



Colour options - White

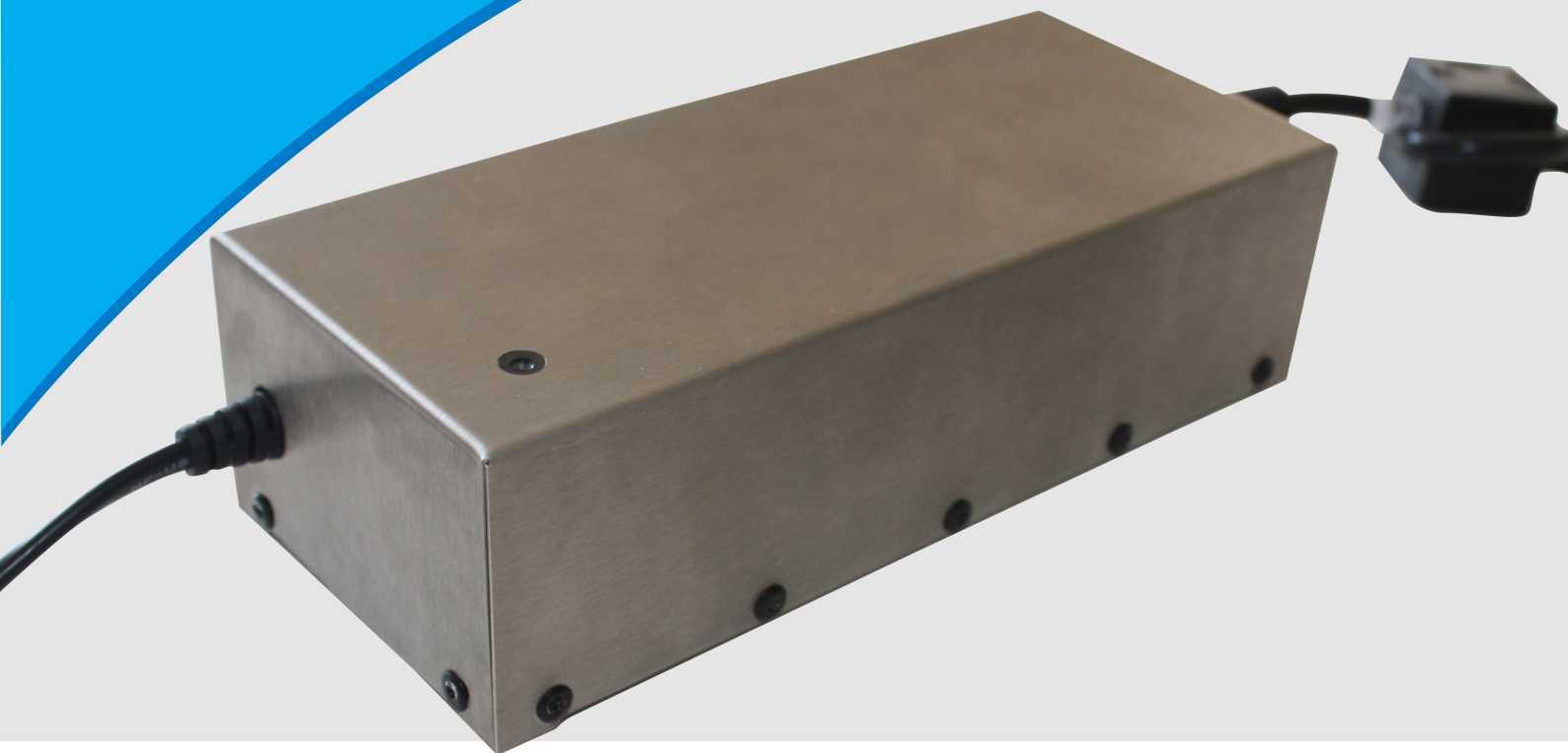


Assembled and tested
in the UK



Integration custom design

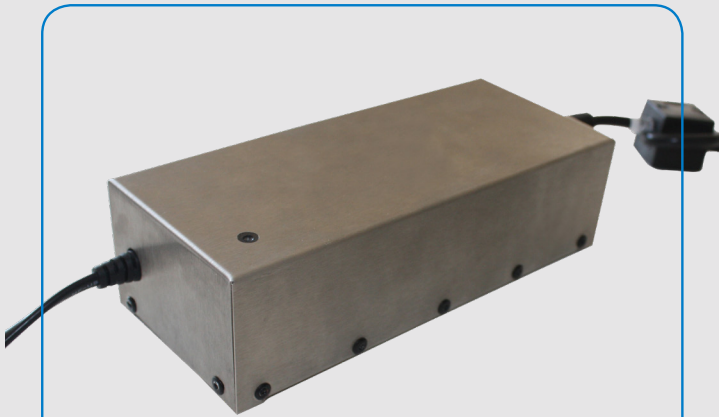
Bespoke engineering



Integration custom design



Some previous design options



Tempest approved power
supply enclosure



Custom design case to enable
fitting into a challenging space



Full access to all ports was
essential



Full airflow had to be
maintained

Integration custom design



Some previous design options



Maximum airflow required at front
to assist with cooling



Another custom case required to
fit a space with other equipment
present



This case had to fit around other
equipment



Access to the rear ports



27 Old Gloucester Street, London,
WC1N 3AX, UK

T:0845 230 6688

F:0845 230 6689

E:enquiries@primarynetworks.co.uk