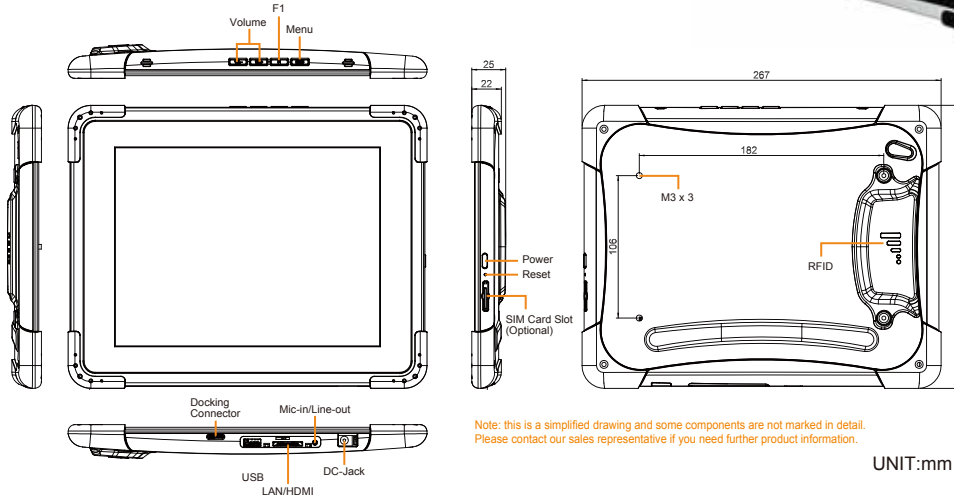


9.7" Compact Rugged tablet PC

Model :M970D-HF

Features:

- 9.7" 1024 x 768 Resolution with IPS LED Panel
- Low-power system with Intel® Atom N2600 processor.
- 2GB DDR3-800 memory
- Built-in Wi-Fi/ Bluetooth Module
- Standard Battery 5300 mAh
- Mobile- Shock, Vibration, and transit drop.
- IP54 Water & Dust proof
- Built-in GPS Module
- Built-in HF-RFID module
- Support 3G (for optional)



Note: this is a simplified drawing and some components are not marked in detail. Please contact our sales representative if you need further product information.

CE FC EN60601-1-1 EN60601-1-2

- Accessories**
- 1.12V 50W Power Adapter x 1
 - 2.LAN (female) Adapter cable x 1
 - 3.Tablet PC Quick Start Guide x 1
 - 4.Manual & recovery CD x 1

System Specification	
Operation System	: Windows Embedded Standard 7 WS7P Windows 7 Pro for Embedded Systems(Optional)
Processor	: Intel® Atom N2600 1.6GHz
System Chipset	: Intel® NM10 Chipset
System Memory	: 2GB DDR3 -800
Storage	: 32GB m-SATA SSD
Audio	: 1W speakerx2
Camera	: Auto Focus 5 Mega pixels camera with Flash in rear
Communication	: Wi-Fi 802.11a/b/g/n bluetooth 4.0 + Class I/GPS HF RFID Support ISO14443A/B & ISO15693 Frequency 13.56MHz (Default) 3G Module (Optional)

Control buttons	
Control Button	: Power button in right side 1 x MENU Key, 1 x Function key 1 x Volume up, 1 x Volume down
LED indicator	: Power / Battery/ HDD Access/WiFi

Power Management	
Power input	: 12V DC
Battery	: 5300mAh battery
Battery Operating Time	: 5 hours (test via battery life 4.0)
Adapter	: 100- 240 V , 50-60 Hz / 12V DC input

- Optional Accessories (refer to next page)**
- Vehicle Docking
 - Desk Docking
 - HDMI (female) Adapter Cable
 - Charging Cart (totally charging 32 pcs)
 - Capacitive Touch Stylus

Mechanical and Environment	
Dimensions (W x L x H)	: 267(W) x 210(L) x 22(H)
Weight	: 988g
Operation Temperature	: Operating: 0° C ~ 50° C
Battery charging Temp.	: 0° C ~45° C
Operation Humidity	: 30%~90% (non condensing)
Drop	: 4 feet
Certifications	: FCC, CE, CCC, EN60601-1-1, EN60601-1-2
IP Proof	: IP54

Display Specification	
Pixel Number	: 1024(H) × 768(V)
Brightness	: 350 cd/m2 (Minimum)
Touch	: Projective-capacity touch (4 points)

I/O Connectors	
I/ O Port	: 1 x 12V DC jack, 1 x USB, 1 x Line out/Mic in, 1x30 pin connector for LAN & HDMI Output (HDMI Adapter cable for Optional)

*note

Battery	flat	Vertical
Charging	0~40 C	0~45 C
Discharging	0~45 C	0~50 C

Revised Date:11/20/2015

9.7" Compact Rugged tablet PC

OPTIONAL ACCESSORIES



Vehicle Docking

Model Name:VD-M970D
Winmate Part Number:98KT00A00004
(Optional VGA out support Windows7 only)

- ◆ Hold the Tablet tightly on the moving vehicle
- ◆ Support both terminal block & 2.5µpower jack vinput
- ◆ 9~36V DC-in wide range DC input
- ◆ IP52 design (Rain prove)



Table Docking

Model Name:DCK97-V2
Winmate Part Number:98K000A00021
(Optional VGA out support Windows7 only)

- ◆ 12V DC-in for Charging
- ◆ USB 2.0 x 2
- ◆ VGA Output max to 1024 x 768
- ◆ LAN x 1 10/100Mb



HDMI Adapter Cable

Winmate Part Number: 94E0190300K0

- ◆ For HDMI output from 30 pin extension port
- ◆ Length:10cm
- ◆ HDMI connector: Type A, female



Hand-Strap

Model Name:M97SP-V1
Winmate Part Number:98K000A0001K

- ◆ The ergonomic hand-strap can help you handle the Rugged Tablet PC much more easily and comfortable.



Charging Cart

Model Name:M97CC-V2
Winmate Part Number:98KT00A00003

- ◆ Charge max. up to 32 pcs of tablet PC at the same time
- ◆ Lockable doors and casters design for security and safety



VESA Mounting Kit

Model Name:M97VS-V1
Winmate Part Number:98K000A0001N

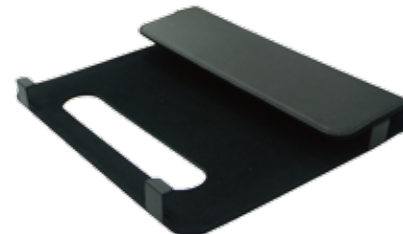
- ◆ VESA 75 x 75 mm screw hole



Mobile Power Station

Model Name:M44BW-100
Winmate Part Number:9A000000000A

- ◆ Model Name: M44BW-100
- ◆ 8.4/12/16/19V DC out
- ◆ Capacity: 8800mAh



Holster

Model Name:M97HS-V1
Winmate Part Number:9B0000000314

- ◆ Holster fo r M970 series use